

# Emissions Technology

in association with

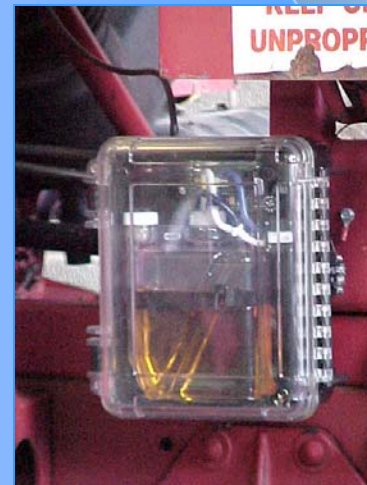
## M&B Transport

Test Results of the DC-100

# M&B Transport

Leyland DAF  
Tractor

License number  
N766BKW



# Opacity Test - SAE J1667

M&B Transport - Leyland DAF Tractor License number N766BKW

Equipment – Wager 6500 Series Digital Smoke Meter

	*Baseline	**After test	% Change
Test 1	7.3	3.5	
Test 2	6.9	2.6	
Test 3	6.4	2.9	
Spread	0.9	0.9	
Avg.	6.9	3.0	<b>-56.5</b>
Test #	1013	14	

\*Baseline Date: February 12,2002

\*Baseline Miles: 682,788 mi.

\*\*Post Install Date: April 18, 2002

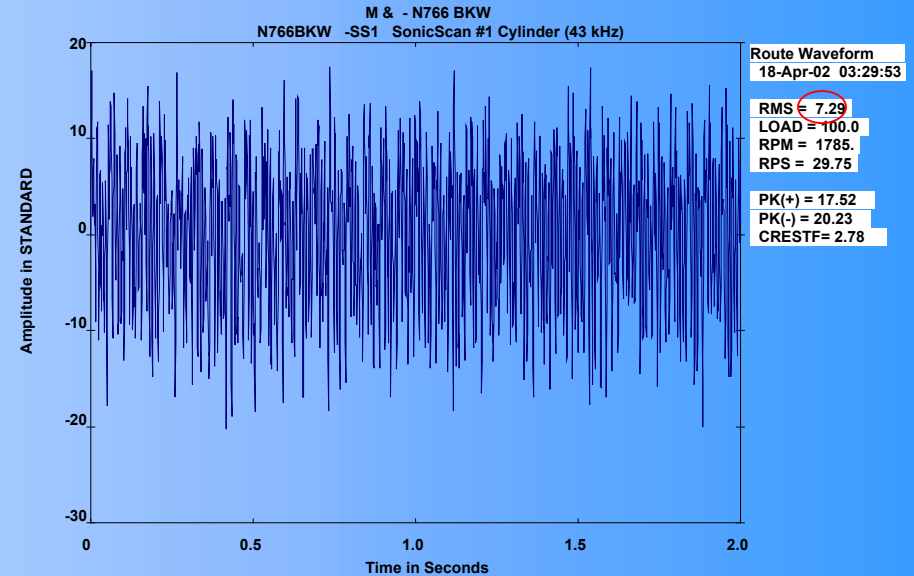
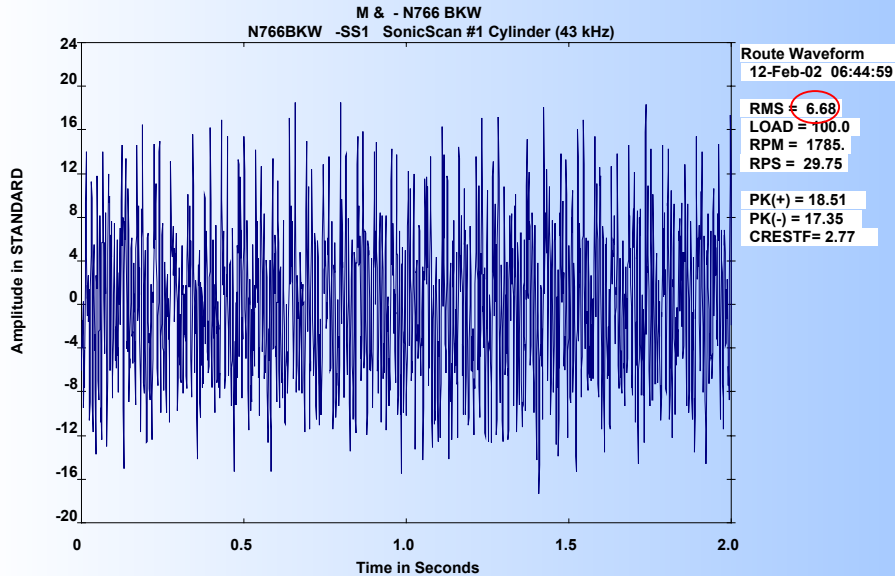
\*\*Miles completed: 10,453

DC-100 unit hours: 284 = 36.8 MPH Average

# M&B - Vibration Analysis - N766BKW

Before Catalyst

After Catalyst



Comparison of the RMS values of the wave form indicates that there is a 9.13% increase in the overall amplitudes of the frequencies measured.

# M&B Transport

Volvo FL-10

License number  
M662RVN



# Opacity Test - SAE J1667

M&B Transport - Volvo FL-10 - License number-M662RVN

Equipment – Wager 6500 Series Digital Smoke Meter

	*Baseline	**After test	% Change
Test 1	4.3	2.8	
Test 2	2.7	2.6	
Test 3	3.3	2.1	
Spread	1.6	0.7	
Avg.	3.4	2.5	-26.5
Test #	1014	306	

\*Baseline Date: February 12, 2002

\*Baseline Miles: 384,260 mi.

\*\*Post Install Date: April 17, 2002

\*\*Miles completed: 4663

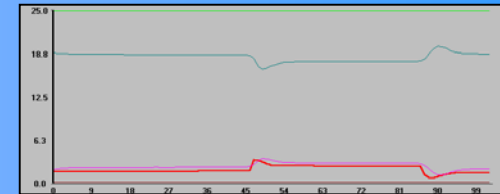
# Emissions – 5 Gas Analysis

M&B Transport - Volvo FL-10 - License number-M662RVN

## Highest Regulated Values

	Idle Speed	NoX (ppm)	HC (ppm)	CO (%)	CO2 (%)	O2 (%)
Baseline	Low	<b>178</b>	<b>7.0</b>	<b>0.01</b>	<b>1.70</b>	<b>18.5</b>
Post-Install	Low	<b>155</b>	<b>5.0</b>	<b>0</b>	<b>1.10</b>	<b>18.9</b>
% Change	-----	<b>-12.9</b>	<b>-28.6</b>	<b>-100.0</b>	<b>-35.3</b>	<b>2.2</b>

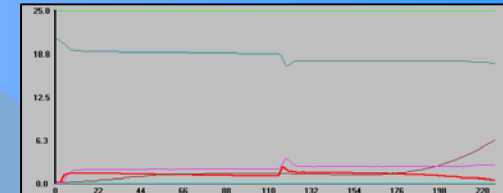
*Baseline*



## Highest Regulated Values

	Idle Speed	NoX (ppm)	HC (ppm)	CO (%)	CO2 (%)	O2 (%)
Baseline	High	<b>224</b>	<b>11.0</b>	<b>0.02</b>	<b>2.40</b>	<b>17.5</b>
Post-Install	High	<b>183</b>	<b>7.0</b>	<b>0</b>	<b>1.40</b>	<b>17.6</b>
% Change	-----	<b>-18.3</b>	<b>-36.4</b>	<b>-100.0</b>	<b>-41.7</b>	<b>0.6</b>

*Post-Install*



\*Baseline Date: February 12, 2002

\*\*Post Install Date: April 17, 2002